

ISOMAX X300 XPS

- ✓ HIGH COMPRESSIVE STRENGTH
- ✓ ENVIRONMENTALLY FRIENDLY
- ✓ DURABLE AND STURDY
- ✓ THERMAL EXCELLENCE
- ✓ EASY INSTALLATION
- ✓ LONG LASTING



ISOMAX X300 XPS



PRODUCT DESCRIPTION

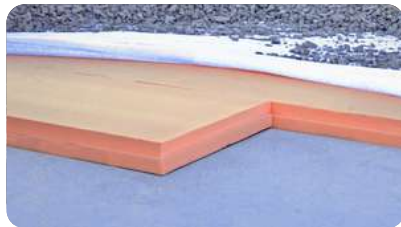
ISOMAX X300 XPS is a high-density, rigid, extruded polystyrene (XPS) insulation panel. It is available in a variety of thicknesses and is suitable for a range of construction applications within residential, commercial and industrial buildings, making it one of the most versatile insulation products in the market. ISOMAX X300 XPS will last as long as the structure in which they are incorporated.



APPLICATIONS

- Under concrete slab insulation
- Inverted roof insulation
- Garden rooftop insulation
- Basement perimeter wall insulation
- Cold storage insulation
- Slab edge insulation
- Green roof insulation
- Cavity wall insulation
- Prefabricated construction insulation
- Thermal break spacers for commercial roof applications

COMMERCIAL



RESIDENTIAL



INDUSTRIAL





TECHNICAL DETAILS

Product Overview	High density extruded polystyrene with 100% closed cell structure
Sheet Size	2400mm X 600mm
Available Thicknesses	30mm, 40mm, 50mm, 60mm, 70mm, 80mm, 90mm, 100mm
Edge Treatment	Square
Surface	Skin on
Compressive Strength (ASTM D1621)	Min. 300kPa
Fire Classifications (AS/NZS 1530.3)	8,0,2,6
Thermal Conductivity (ASTM C518)	0.0337 W/mK

ISOMAX X300 XPS

ISOMAX X300 XPS is compliant with the Building Code of Australia (BCA) when used as an insulation barrier.



PRODUCT DETAILS

Thickness	R-Value
30mm	R0.9
40mm	R1.2
50mm	R1.5
60mm	R1.8
70mm	R2.1
80mm	R2.4
90mm	R2.7
100mm	R3.0

- Compliant with the Building Codes of Australia (BCA)
- Thermal testing to AS/NZ 4859.1
- Tested for fire resistance
- Low (or no) VOC (Volatile Organic Compounds) rating
- Manufactured with Zero ODP (Ozone Depleting Substances)
- Non hazardous





SPECIAL FEATURES

High Compressive Strength
300kPa

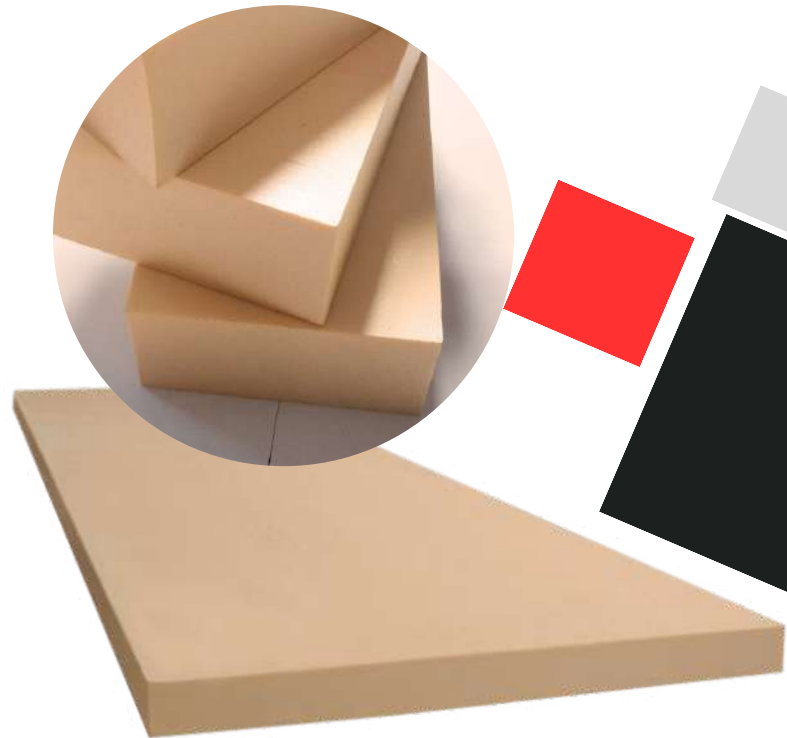
Environmentally Friendly
Free of CFC & HCFC and
100% recyclable

Durable and Sturdy
100% closed cell structure

Thermal Excellence
Thermal conductivity for
application in any condition

Easy Installation
Lightweight, easy to handle
and can be cut with a knife

Long Lasting
Low moisture absorption
(<1%), water-resistant and
rot-proof



HANDLING & STORAGE:

- Lightweight and easy to handle
- Can be cut easily with a knife or saw
- Can be stored under cover for any length of time
- Should be stored flat
- Limit exposure to direct sunlight to prevent possible surface damage
- Avoid contact with volatile solvents and open flames
- Avoid storing it uncovered for long term outdoors

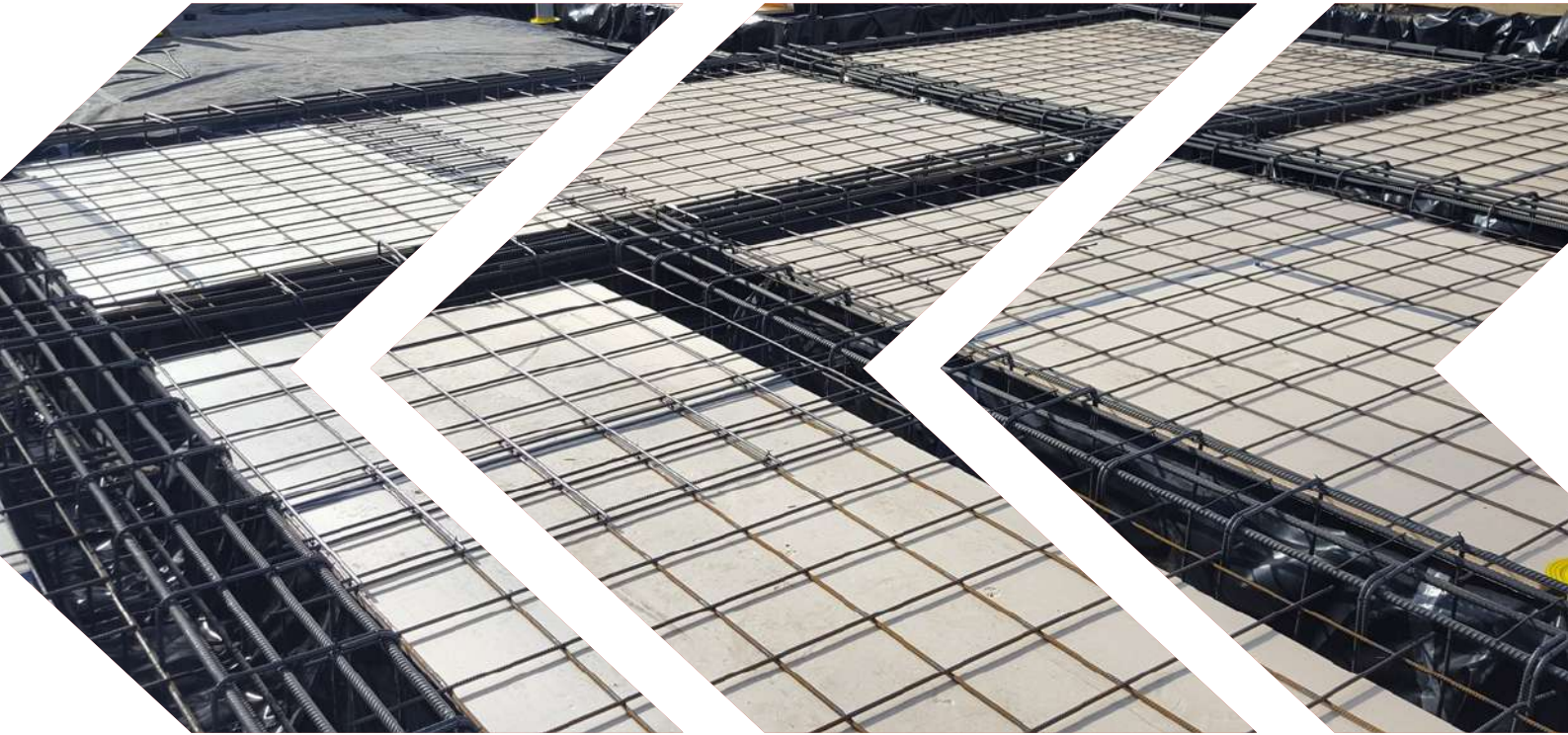


CONTACT US



3 Malibu Circuit, Carrum Downs, Victoria, 3201
admin@thermostruct.com.au
www.thermostruct.com.au





ISOMAX X300 XPS INSULATION GUIDE

- ✓ RESIDENTIAL
- ✓ COMMERCIAL
- ✓ INDUSTRIAL

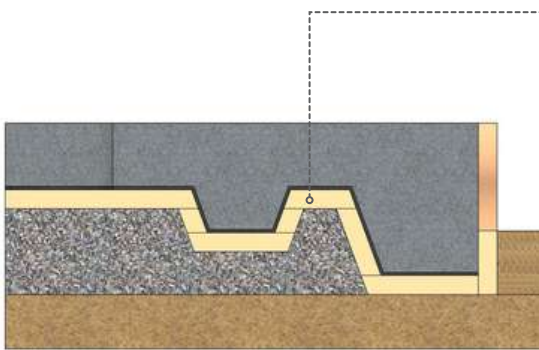


ISOMAX X300 XPS

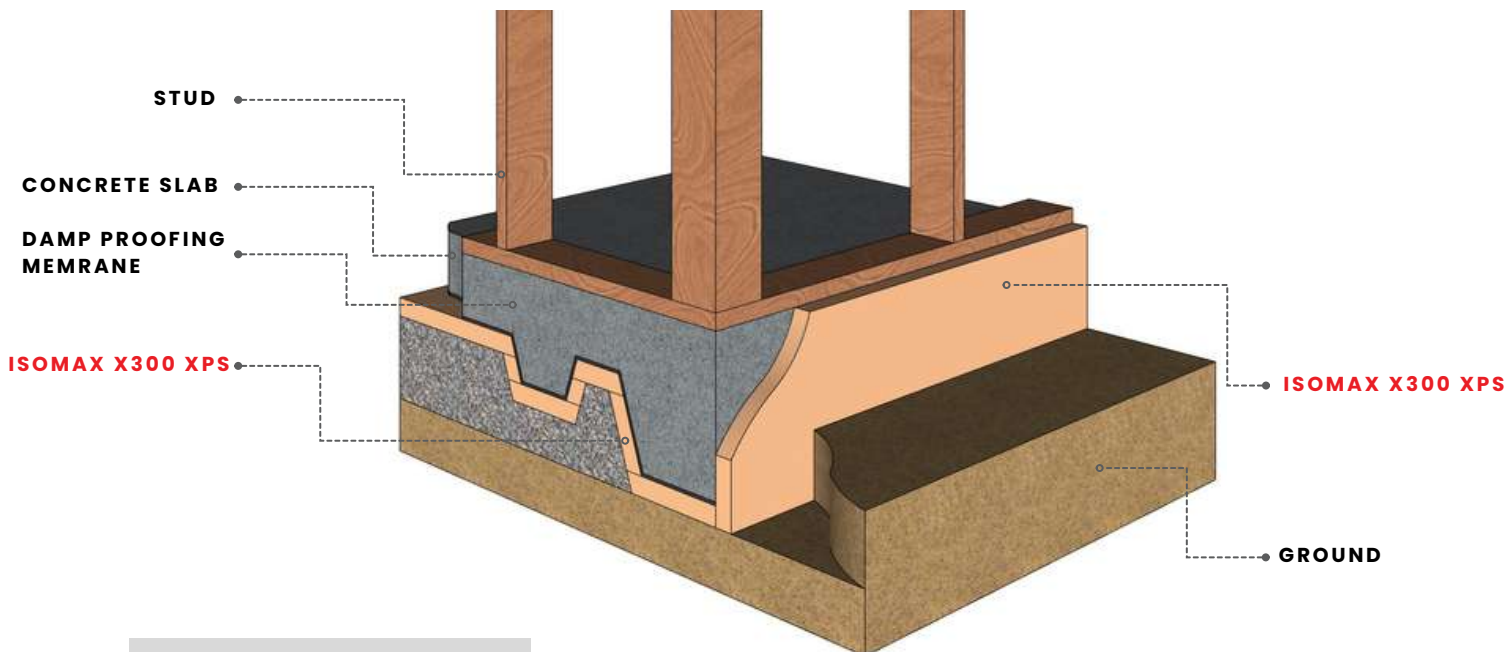
To achieve a high thermal performance for concrete floors, it is recommended to incorporate high levels of Insulation. ISOMAX X300 XPS is essential for under slab insulation and slab edge insulation. This ensures excellent thermal envelope of the building that aims to provide a comfortable space and help save energy.



SLAB ON GROUND INSULATION



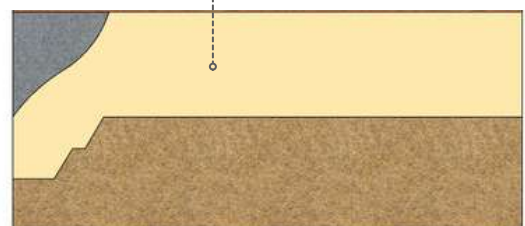
ISOMAX X300 XPS is suitable for ground slab insulation which will serve as a thermal barrier between the ground (earth) and the inside of a building, restricting the transfer of heat in summer and cold in winter.



SLAB EDGE INSULATION



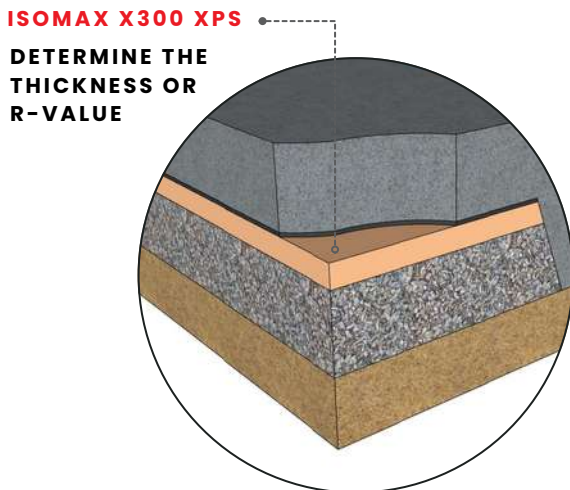
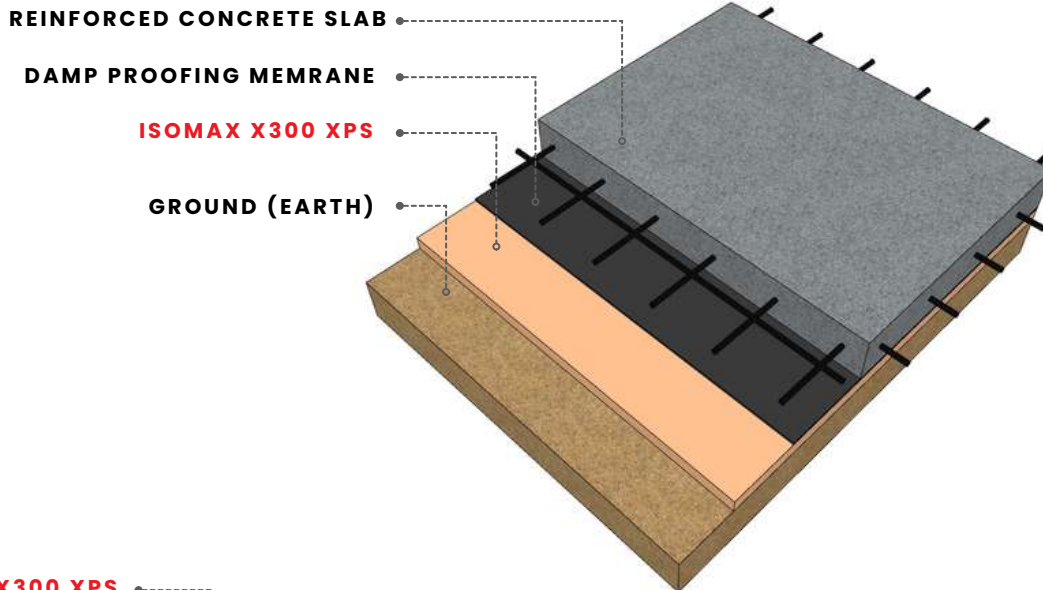
ISOMAX X300 XPS is ideal for insulation of the building's perimeter or the exposed vertical edge of the concrete slab to ensure optimal thermal performance of the building.



SLAB ON GROUND INSULATION

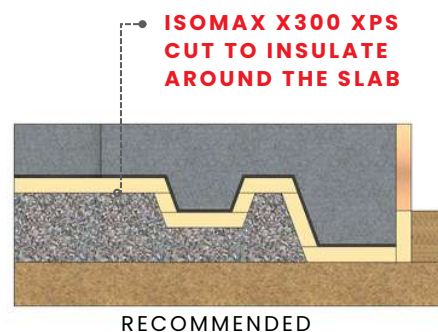
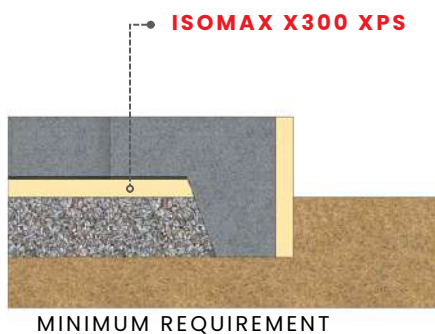


ISOMAX X300 XPS is suitable for ground slab insulation which will serve as a thermal barrier between the ground (earth) and the inside of a building, restricting the transfer of heat in summer and cold in winter.



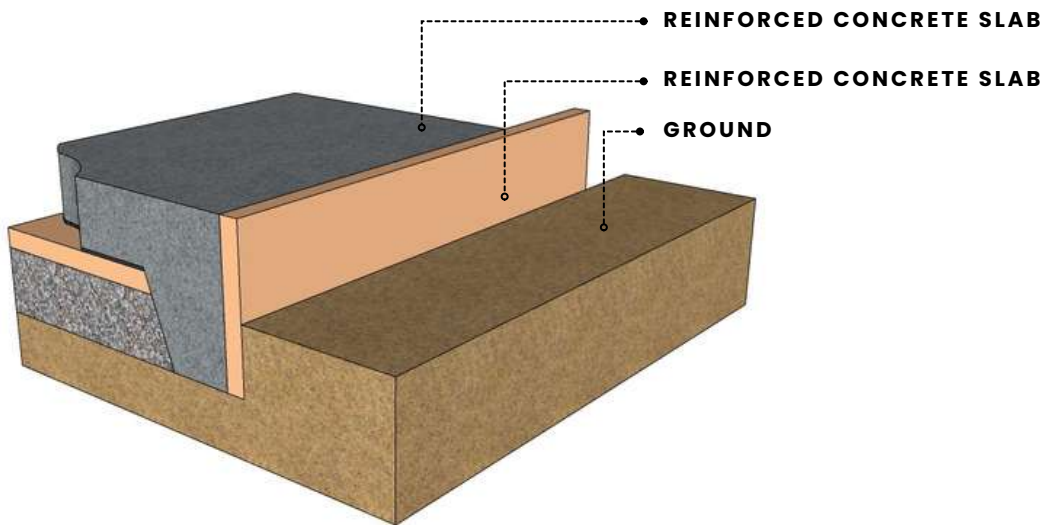
INSTALLATION TIPS

- Determine the thermal resistance requirement. The higher the R-value the, the higher the thermal resistance to heat transfer.
- For best practice, it is recommended to install ISOMAX X300 XPS as a continuous barrier between the ground and the concrete slab



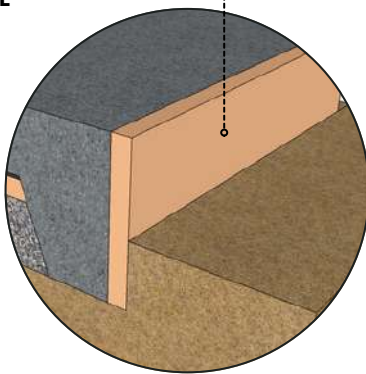
SLAB ON EDGE INSULATION

ISOMAX X300 XPS is ideal for insulation of the building's perimeter or the exposed vertical edge of the concrete slab to ensure optimal thermal performance of the building.



ISOMAX X300 XPS

**DETERMINE THE
THICKNESS OR
R-VALUE**



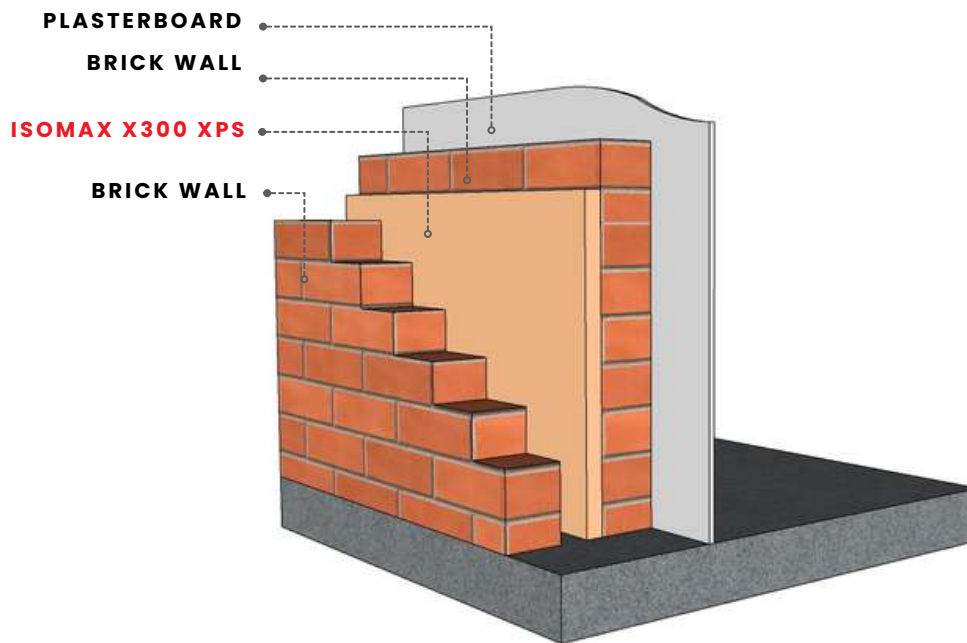
INSTALLATION TIPS

- Determine the thermal resistance requirement. The higher the R-value the, the higher the thermal resistance to heat transfer.
- ISOMAX X300 XPS can be fixed to the slab edge using a construction grade adhesive* or mechanical insulation fasteners can be used

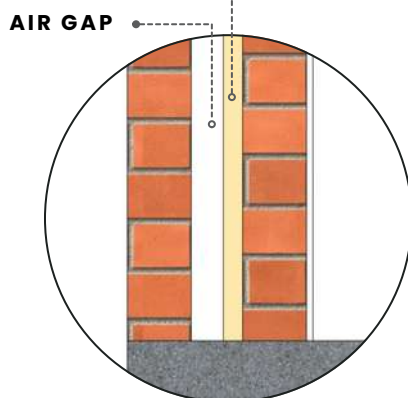
**check with glue manufacturer that all surface types are compatible with the adhesive*

DOUBLE CAVITY BRICK WALL INSULATION

ISOMAX X300 XPS, with its highly moisture resistant feature, is suitable for double cavity brick wall insulation. It is applied on the inner wall to prevent condensation.



ISOMAX X300 XPS
DETERMINE THE
THICKNESS OR R-VALUE



INSTALLATION TIPS

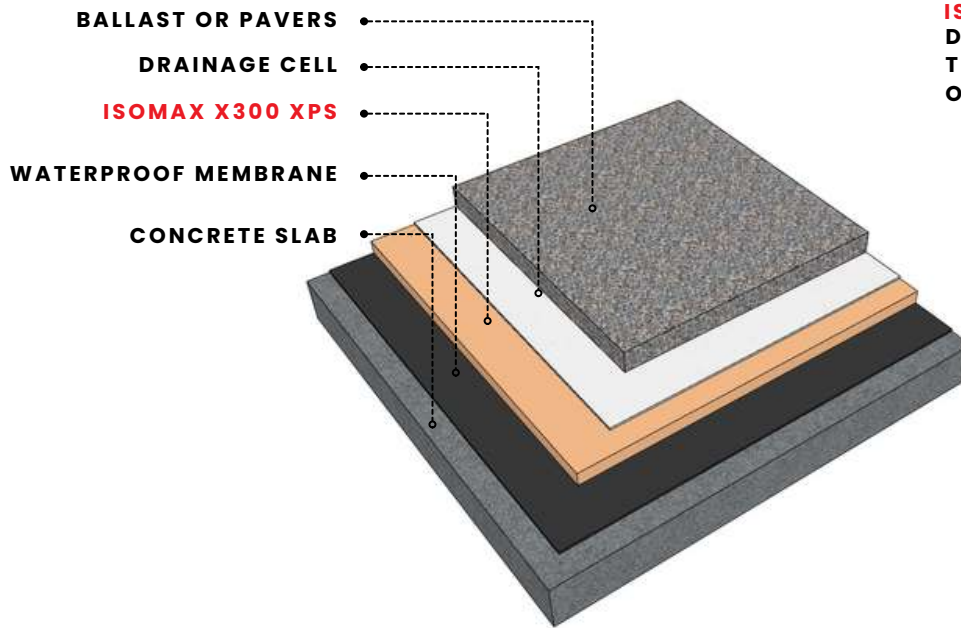
- Determine the thermal resistance requirement. The higher the R-value the, the higher the thermal resistance to heat transfer.
- Determine the required air gap spacing in between ISOMAX X300 XPS insulation and exterior brick wall.

ROOF INSULATION

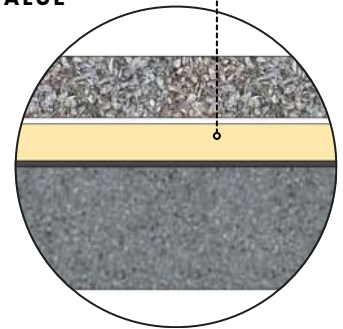
CONCRETE IRMA ROOF INSULATION

ISOMAX X300 XPS is highly compressive and moisture resistant, which makes it suitable for Inverted Roof Membrane Assembly (IRMA) concrete roof insulation.

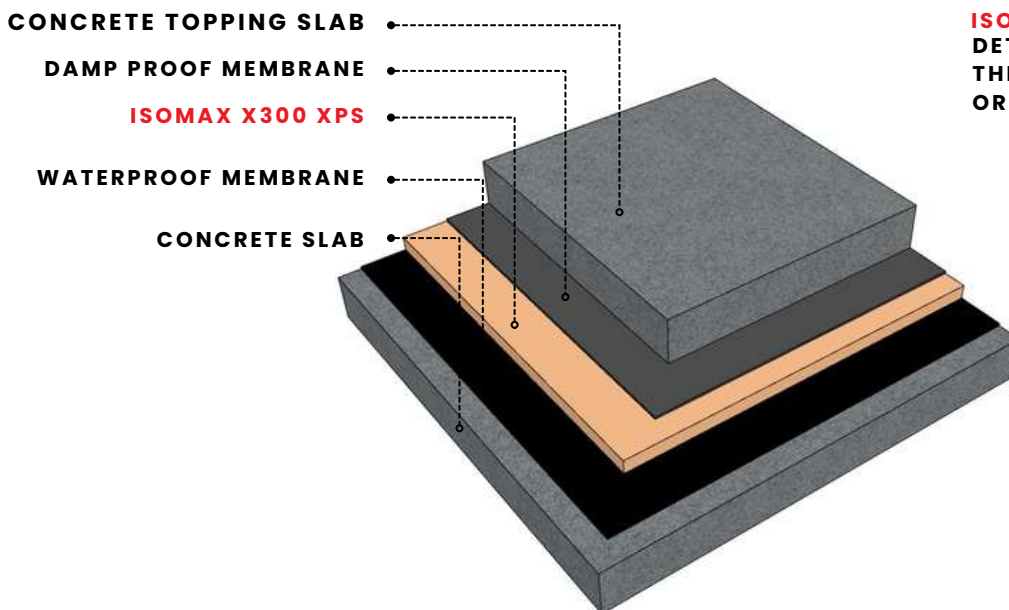
WITH BALLAST OR PAVERS



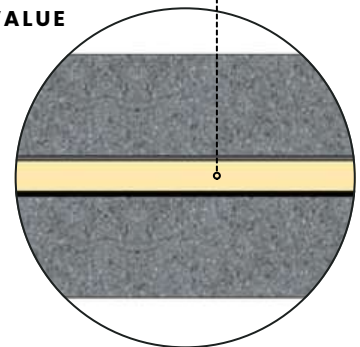
ISOMAX X300 XPS
DETERMINE
THICKNESS
OR R-VALUE



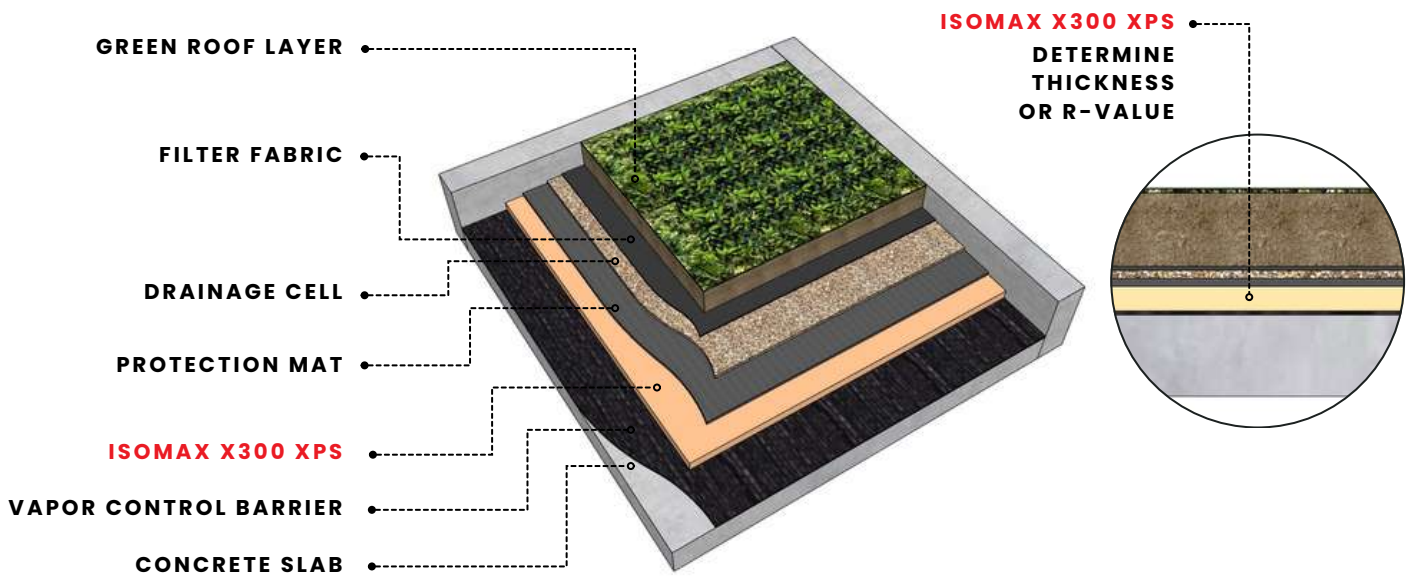
WITH CONCRETE TOPPING SLAB



ISOMAX X300 XPS
DETERMINE
THICKNESS
OR R-VALUE



For application specific advice please contact Thermostruct at 1300 476 629.

ROOF INSULATION**GREEN ROOF SLAB INSULATION****RESIDENTIAL****COMMERCIAL****INDUSTRIAL****ABOUT US**

AT THERMOSTRUCT WE SUPPLY THE LARGEST RANGE OF INSULATION MATERIALS AVAILABLE IN AUSTRALIA. WE ARE COMMITTED TO DOING EVERYTHING POSSIBLE TO ENSURE THAT YOUR THERMAL REQUIREMENTS ARE MET AND WITHIN YOUR BUDGET.

ALL OF THE INSULATION PRODUCTS WE SUPPLY HAVE BEEN MANUFACTURED AND TESTED TO STANDARDS SET BY THE BUILDING CODES OF AUSTRALIA (BCA) AND THEY ALL CARRY A 100% MANUFACTURER'S GUARANTEE.



3 Malibu Circuit, Carrum Downs, Victoria, 3201
admin@thermostruct.com.au
www.thermostruct.com.au